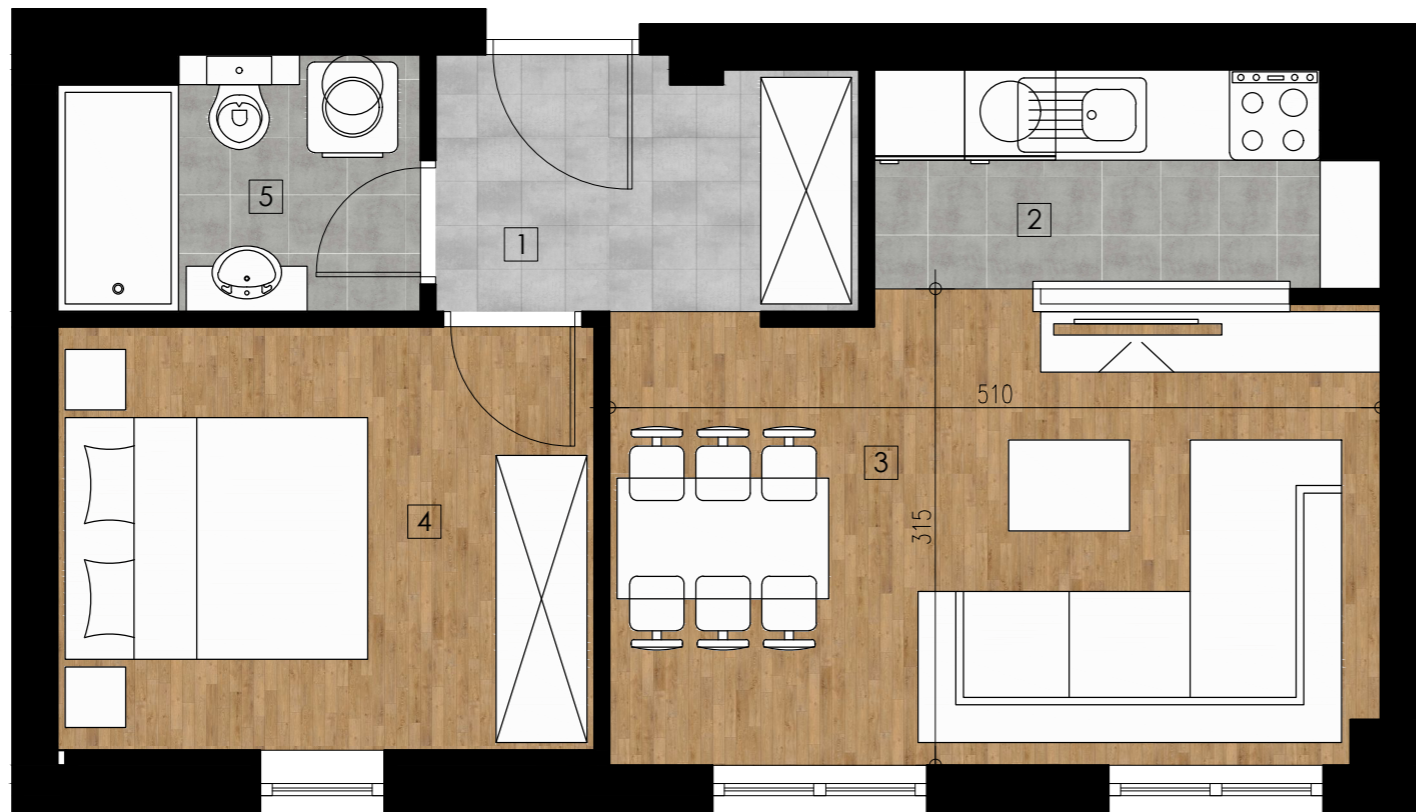


LAMELA 1 - PRIZEMLJE
TROSOBAN STAN - 55.53 m²
STAN BR. 01

| BR. | PROSTORIJA | M ² |
|-----|----------------|----------------|
| 1 | HODNIK | 6.12 |
| 2 | KUHINJA | 5.41 |
| 3 | DNEVNI BORAVAK | 19.52 |
| 4 | SOBA 1 | 7.83 |
| 5 | SOBA 2 | 12.53 |
| 6 | KUPATILO | 4.12 |
| | | 55.53 |



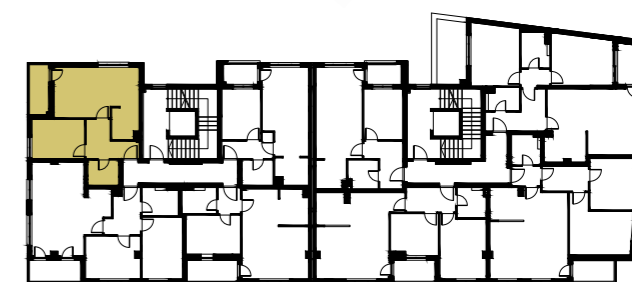
LAMELA 1 - PRIZEMLJE
DVOSOBAN STAN - 38.52 m²
STAN BR. 02

| BR. | PROSTORIJA | M ² |
|-----|----------------|----------------|
| 1 | HODNIK | 4.60 |
| 2 | KUHINJA | 4.73 |
| 3 | DNEVNI BORAVAK | 15.33 |
| 4 | SOBA | 9.94 |
| 5 | KUPATILO | 3.92 |
| | | 38.52 |



LAMELA 1 - PRIZEMLJE
DVOSOBAN STAN - 35.75 m²
STAN BR. 03

| BR. | PROSTORIJA | M ² |
|-----|----------------|----------------|
| 1 | HODNIK | 3.50 |
| 2 | KUHINJA | 3.83 |
| 3 | DNEVNI BORAVAK | 15.21 |
| 4 | SOBA | 9.45 |
| 5 | KUPATILO | 3.76 |
| | | 35.75 |



LAMELA 1
DVOSOBAN STAN - 45.72 m²
STANOVI BR. 04, 08, 12, 16

| BR. | PROSTORIJA | M ² |
|-----|----------------|----------------|
| 1 | HODNIK | 6.84 |
| 2 | KUHINJA | 4.07 |
| 3 | DNEVNI BORAVAK | 18.88 |
| 4 | SOBA | 9.86 |
| 5 | KUPATILO | 3.76 |
| T | TERASA | 2.31 |
| | | 45.72 |



LAMELA 1
TROSOBAN STAN - 64.74 m²
STANOVI BR. 05, 09, 13, 17

| BR. | PROSTORIJA | M ² |
|-----|----------------|----------------|
| 1 | HODNIK | 6.45 |
| 2 | KUHINJA | 4.09 |
| 3 | DNEVNI BORAVAK | 24.00 |
| 4 | SOBA 1 | 11.01 |
| 5 | SOBA 2 | 11.90 |
| 6 | KUPATILO | 4.71 |
| T | TERASA | 2.58 |
| | | 64.74 |



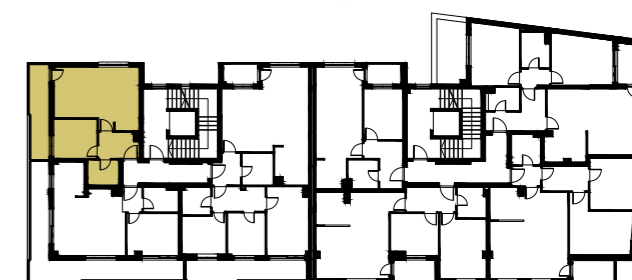
LAMELA 1
DVOSOBAN STAN - 48.90 m²
STANOVI BR. 06, 10, 14, 18

| BR. | PROSTORIJA | M ² |
|-----|----------------|----------------|
| 1 | HODNIK | 2.79 |
| 2 | KUHINJA | 4.94 |
| 3 | DNEVNI BORAVAK | 22.94 |
| 4 | SOBA | 10.31 |
| 5 | KUPATILO | 4.16 |
| T | TERASA | 3.76 |
| | | 48.90 |



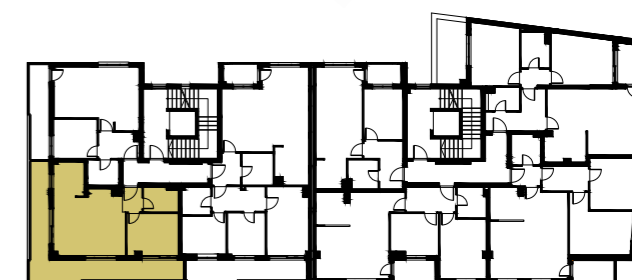
LAMELA 1
DVOSOBAN STAN - 42.69 m²
STANOVI BR. 07, 11, 15, 19

| BR. | PROSTORIJA | M ² |
|-----|----------------|----------------|
| 1 | HODNIK | 4.71 |
| 2 | KUHINJA | 4.22 |
| 3 | DNEVNI BORAVAK | 18.19 |
| 4 | SOBA | 9.45 |
| 5 | KUPATILO | 3.76 |
| T | TERASA | 2.36 |
| | | 42.69 |



LAMELA 1 - POVUČENA ETAŽA
DVOSOBAN STAN - 43.81 m²
STAN BR. 20

| BR. | PROSTORIJA | M ² |
|-----|----------------|----------------|
| 1 | HODNIK | 4.78 |
| 2 | KUHINJA | 3.79 |
| 3 | DNEVNI BORAVAK | 19.15 |
| 4 | SOBA | 8.10 |
| 5 | KUPATILO | 3.76 |
| T | TERASA | 4.23 |
| | | 43.81 |



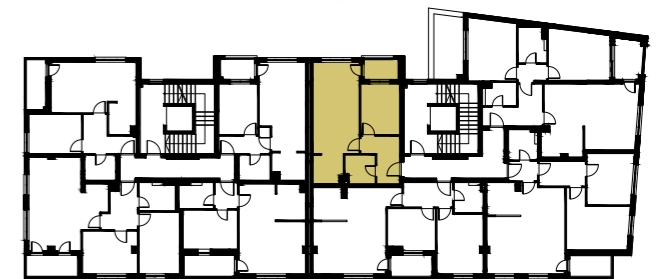
LAMELA 1 - POVUČENA ETAŽA
DVOSOBAN STAN - 53.56 m²
STAN BR. 21

| BR. | PROSTORIJA | M ² |
|-----|----------------|----------------|
| 1 | HODNIK | 2.30 |
| 2 | KUHINJA | 5.04 |
| 3 | DNEVNI BORAVAK | 20.55 |
| 4 | SOBA | 10.15 |
| 5 | KUPATILO | 3.92 |
| T | TERASA | 11.60 |
| | | 53.56 |



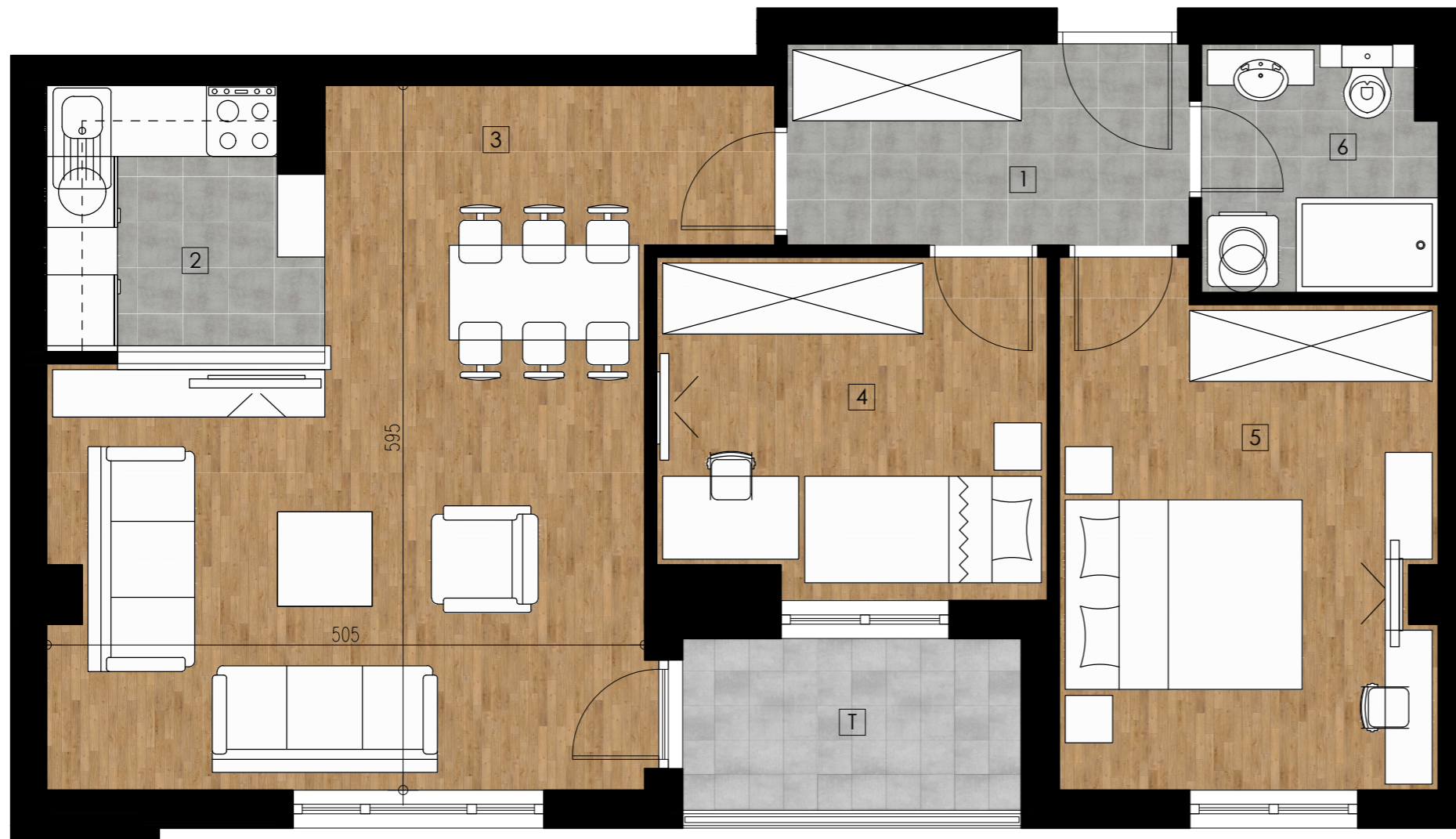
LAMELA 1 - POVUČENA ETAŽA
ČETVOROSOBAN STAN - 94.62 m²
STAN BR. 22

| BR. | PROSTORIJA | M ² |
|-----|----------------|----------------|
| 1 | HODNIK | 3.87 |
| 2 | KUHINJA | 7.44 |
| 3 | DNEVNI BORAVAK | 28.40 |
| 4 | SOBA 1 | 13.41 |
| 5 | SOBA 2 | 7.64 |
| 6 | SOBA 3 | 8.17 |
| 7 | KUPATILO | 3.76 |
| 8 | DEGAŽMAN | 6.12 |
| 9 | KUPATILO | 4.73 |
| T.1 | TERASA 1 | 2.36 |
| T.2 | TERASA 2 | 8.72 |
| | UKUPNO | 94.62 |



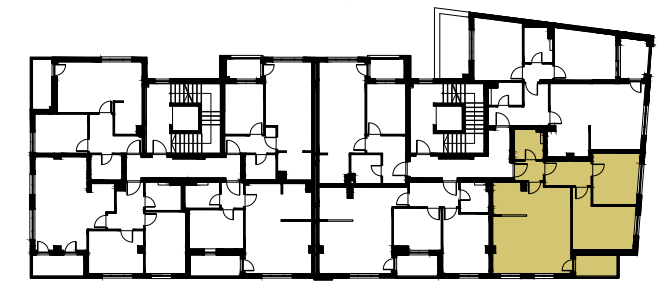
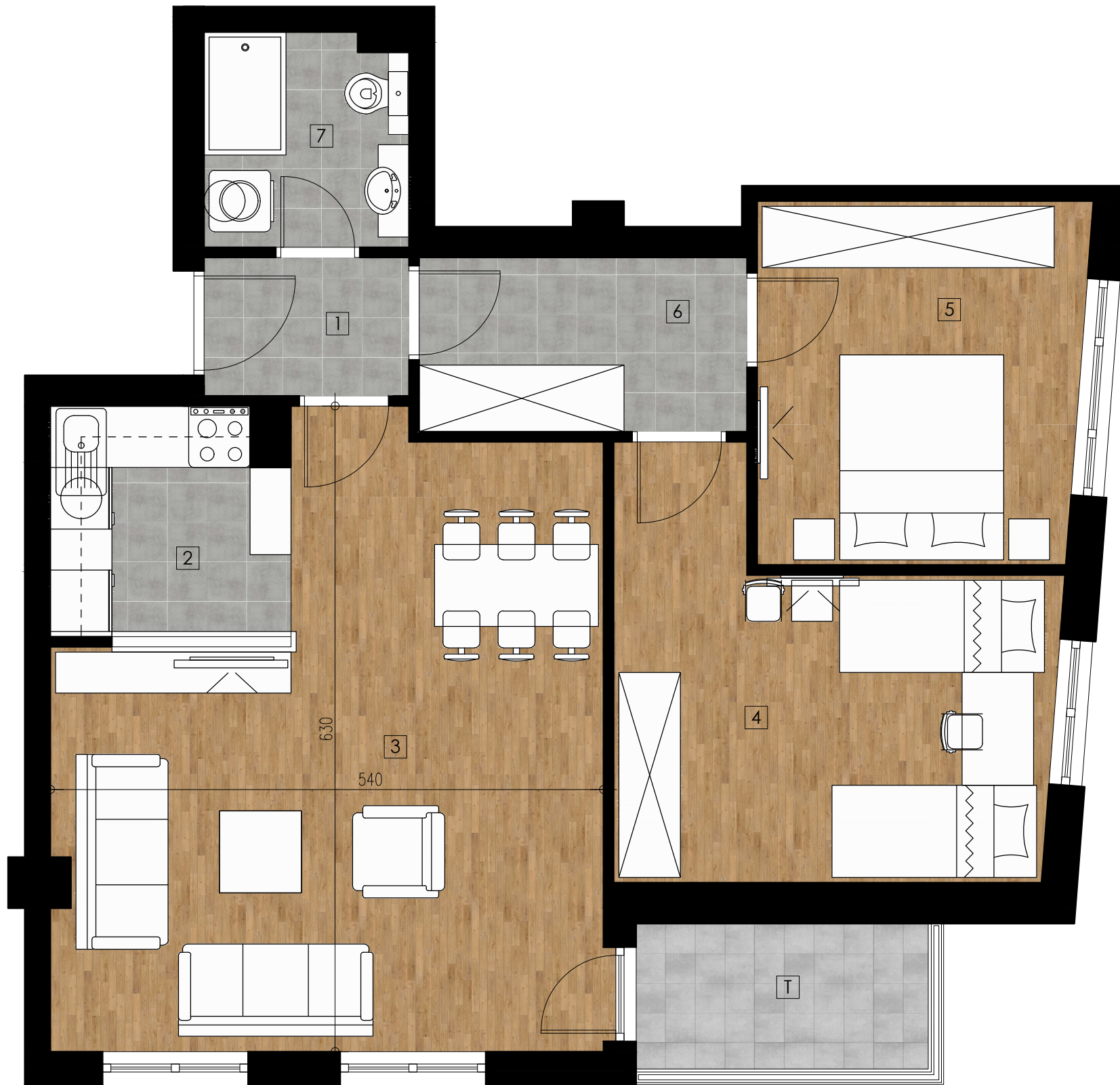
LAMELA 2
DVOSOBAN STAN - 46.77 m²
STANOVI BR. 05, 09, 13, 17

| BR. | PROSTORIJA | M ² |
|-----|----------------|----------------|
| 1 | HODNIK | 6.60 |
| 2 | KUHINJA | 4.17 |
| 3 | DNEVNI BORAVAK | 20.16 |
| 4 | SOBA | 9.45 |
| 5 | KUPATILO | 4.00 |
| T | TERASA | 2.39 |
| | | 46.77 |



LAMELA 2
TROSOBAN STAN - 66.51 m²
STANOVI BR. 02, 06, 10, 14, 18

| BR. | PROSTORIJA | M ² |
|-----|----------------|----------------|
| 1 | HODNIK | 5.78 |
| 2 | KUHINJA | 4.99 |
| 3 | DNEVNI BORAVAK | 25.86 |
| 4 | SOBA 1 | 9.26 |
| 5 | SOBA 2 | 13.44 |
| 6 | KUPATILO | 4.07 |
| T | TERASA | 3.11 |
| | 66.51 | |



LAMELA 2
TROSOBAN STAN - 72.78 m²
STANOVI BR. 07, 11, 15, 19

| BR. | PROSTORIJA | M ² |
|-----|----------------|----------------|
| 1 | HODNIK | 2.70 |
| 2 | KUHINJA | 5.05 |
| 3 | DNEVNI BORAVAK | 27.73 |
| 4 | SOBA 1 | 14.56 |
| 5 | SOBA 2 | 11.18 |
| 6 | DEGAŽMAN | 5.44 |
| 7 | KUPATILO | 4.10 |
| T | TERASA | 2.02 |
| | | 72.78 |



LAMELA 2
ČETVOROSOBAN STAN - 81.58 m²
STANOVI BR. 04, 08, 12, 16, 20

| BR. | PROSTORIJA | M ² |
|-----|----------------|----------------|
| 1 | HODNIK | 9.56 |
| 2 | KUHINJA | 5.87 |
| 3 | DNEVNI BORAVAK | 24.63 |
| 4 | SOBA 1 | 11.94 |
| 5 | SOBA 2 | 10.49 |
| 6 | SOBA 3 | 8.19 |
| 7 | DEGAŽMAN | 2.83 |
| 8 | KUPATILO | 4.21 |
| T | TERASA | 3.86 |
| | UKUPNO | 81.58 |